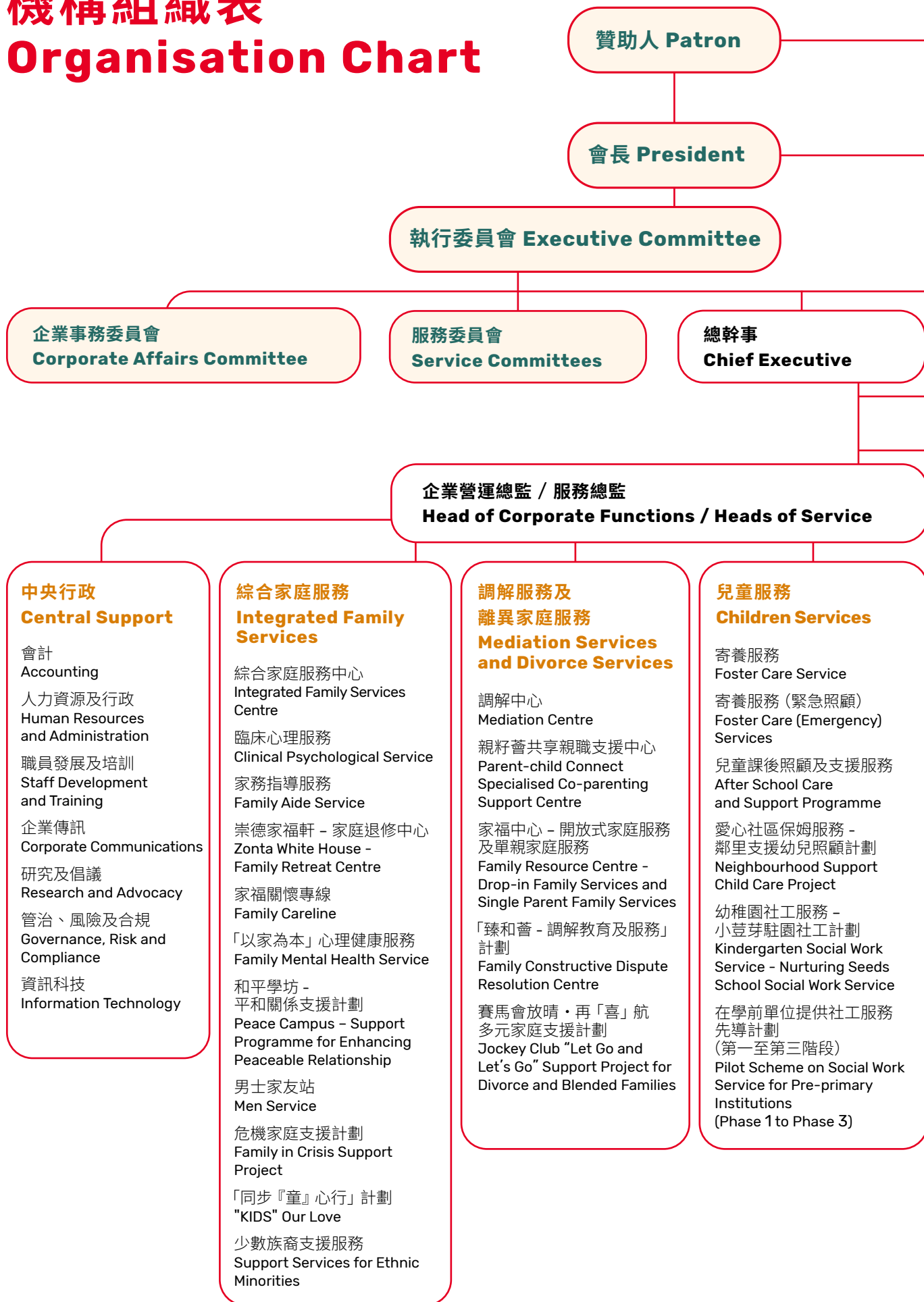


機構組織表 Organisation Chart



**香港特別行政區行政長官
李家超先生，大紫荊勳賢，SBS, PDSM, PMSM**

(由 2022 年 7 月 1 日起)

The Honourable John KC Lee,
GBM, SBS, PDSM, PMSM
The Chief Executive of the Hong Kong
Special Administrative Region
(From 1st July, 2022)



**香港特別行政區行政長官
林鄭月娥女士，GBM, GBS**

(至 2022 年 6 月 30 日止)

The Hon Mrs. Carrie Lam Cheng Yuet-ngor,
GBM, GBS
The Chief Executive of the Hong Kong
Special Administrative Region
(Till 30th June, 2022)



李家祥博士，GBS, OBE, JP

Dr. Eric Li Ka-cheung, GBS, OBE, JP



**高級行政人員部
Senior Executive Unit**

**高級職員管理委員會
Senior Staff Management Committee**

**人事及財務委員會
Personnel and Finance Committee**

**家福慈善基金委員會
Benefactors Fund Allocation Committee**

**青少年服務
Youth Services**

- 學校社會工作服務
School Social Work Services
- 藝進同學會賽馬會將軍澳青年坊
ATAA Jockey Club Tseung Kwan O Youth Square
- 青少年精神健康服務
Adolescent Mental Health Service
- 衝突化解培育服務
Peaceful Conflict Resolution Services
- 「網絡」教育及輔導服務
"Net" Education and Counselling Service
- 特殊教育需要服務
Service for Special Educational Need (SEN)
- 青少年·家長親職教育
Adolescent Parenting
- 生涯目標規劃服務
Life Goal Planning Service
- 全方位學生輔導服務
Comprehensive Student Guidance Service
- 成長的天空計劃 (小學)
Understanding Adolescent Project (Primary School)

**長者社區照顧及支援服務
Community Care and Support Services for the Elderly**

- 綜合家居照顧服務
Integrated Home Care Services
- 改善家居及社區照顧服務
Enhanced Home and Community Care Services
- 九龍城活齡中心
Kowloon City Centre for Active Ageing
- 支援身體機能有輕度缺損的長者試驗計劃
Pilot Scheme on Home Care and Support for Elderly Persons with Mild Impairment
- 長者社區照顧服務券試驗計劃
Pilot Scheme on Community Care Service Voucher for the Elderly
- 彈性日間照顧服務
Flexible Day Care Service
- 家福護老站
Carers Support Service
- 社區復康及痛楚紓緩站
Community Rehabilitation and Pain Relief Station
- 長者及照顧者心理健康服務
Elders and Caregivers Mental Health Service
- 預設照顧計劃
Advance Care Planning Project

**專項服務
Special Services**

- 理財教育中心
Financial Education Centre
- 婦女及家庭成長中心
Women and Family Enhancement Centre
- 「婦女創新天」
香港賽馬會社區資助計劃
"Bridge to Competence Project" funded by The Hong Kong Jockey Club
- 「婆媳緣·祖孫情」
多代家庭教育及支援計劃
Education and Support Project for Multi-generational Families
- 全人專業服務
Wellness Programme
- 義工統籌
Volunteer Coordination
- 專業督導及培訓
Professional Supervision and Consultation
- 專項基金
Designated Funds